

TEACHER GUIDANCE

Q&A case study videos

GETTING STARTED

JLR Create Possible is about thinking big and supporting all students to develop and achieve their ambitions for the future.

That's why we've created a series of Q&A videos with current employees: to showcase different and unexpected roles at a cutting-edge technology company like JLR, and the unique career paths of individuals working in them.

By watching these videos, students will gain insight into the day-to-day roles, achievements and personal passions of these professionals. They will also be encouraged to think about their own future careers and the skills they might need to get there. We hope these stories will inspire your students to imagine what could be possible.

AT A GLANCE

AGE

11-14 year olds

TIME

- Each video is 3-4 minutes long. This guidance includes flexible options ranging from short discussions to research projects for teams of students

RESOURCES

- 3-4 minute case study videos of JLR employees

MATERIALS

- Laptop/tablet for showing the videos (if you want students to research independently they will need devices to use in teams)
- Note taking materials

EMPLOYABILITY LINKS

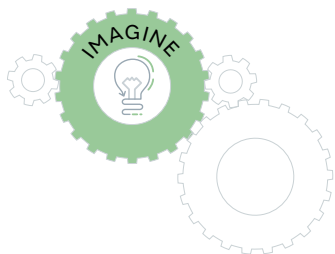
- Foundational and transferable skills for all jobs and careers
- Understanding of job roles
- Learning about different pathways into work

HOW TO USE THE RESOURCE

Each video is 3-4 minutes long. They have been designed so you can facilitate them flexibly, to fit in with your curriculum and schemes of work. The activity guidance below are starter ideas for how you could use them with your students to broaden their awareness of potential career paths, encourage self-reflection, and identify transferable skills used in the workplace.

LEARNING OUTCOMES

- Broaden awareness:** Encourage students to think widely about potential career paths and widen students' understanding of what careers are out there through direct career and labour market information, aligned with the second Gatsby benchmark.
- Self-reflection:** Encourage students to recognise their own strengths and how they can be applied in the workforce.
- Transferable skills:** Identify foundational transferable skills that are in high demand from employers.



ACTIVITY GUIDANCE

Option 1: perspectives discussion [15 minute]

- Play each of the videos for your students. Before starting the videos, encourage students to take notes while watching, focusing on these key questions:
 - What surprised you about the jobs employees talked about doing at JLR?
 - What skills did each employee mention in their videos?
 - How did each employees' career path differ from traditional expectations?
 - What personal qualities do you think are necessary for the roles discussed?
 - What advice did employees offer to individuals interested in pursuing similar careers?
 - What other questions would you have for them?
- After watching engage in a whole-class, group discussion about the different careers and career routes that were shown in the videos.
- In a whole-class discussion then ask students to reflect on the transferable skills mentioned throughout the videos and get them to consider what skills they possess, and how these skills could map onto a job like the ones in the films.

Go deeper: To help encourage students uncover and to think more deeply about the skills they possess, you could encourage them to take the **JLR Create Possible Grow Quiz**.

Option 2: Challenging stereotypes: research activity [30-60 minutes]

- Split the class into groups. This task is about researching unexpected roles in sectors linked to your subject or curriculum.
- Assign one of the case study videos to each of the groups (you can have multiple groups researching the same role).
- Ask groups to split up and watch the videos. Before starting the videos, encourage groups to take notes while watching, focusing on these key questions:
 - When you think about the car industry what type of roles would you usually think of?

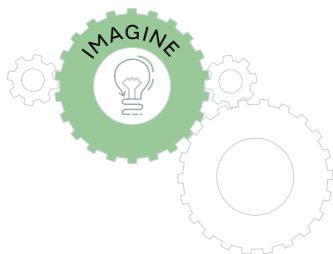
- How do the jobs shown differ from those common perceptions?
 - Did they expect this role to exist in the sector?
- Challenge students to, in groups, find another unexpected role in another sector. Pick a sector or sectors linked to your subject, or leave the choice up to students. The key things for them to report back on are:
 - What industry have they chosen?
 - What are the common expectations of roles in that industry?
 - Why is the role they've found different from that expectation?
 - Who would this role suit?
- Groups should present their role back to the class. Encourage them to respond to each other, and discuss anything that surprises, or explore where their misconceptions might have come from.

Go deeper: To help consolidate their learning and continue exploring new and different career paths, why not try the **JLR Create Possible Creators' challenge**, which is a fun card based game which encourages students to think creatively about different design challenges.

Option 3: At home viewing [15 minutes]

- This activity is particularly suitable for students who are considering their choice of GCSE subjects.
- Encourage your students to watch the case study videos as homework.
- Prompt them to consider the diverse career paths available at JLR and reflect on the skills highlighted in each video.
- Ask them to think about how these insights align with their personal interests and skills, and the different career pathways these could open up.

Go deeper: You could ask students to complete the **JLR Create Possible Innovative thinking journal**, which will help them reflect on a piece of work they've completed recently. In the process they will uncover important insight into the skills they used to complete the piece of work.



SUPPORTING YOUR CURRICULUM

This resource has been developed to support teachers across the curriculum. You can see some starter ideas below for where subject specialists and career leads, may want to use these videos to support with wider curriculum learning:

Business studies coursework

Are you teaching your students about the fundamentals of how a business works? Show Ritika's video to illustrate the numerous segments that are involved in any one business.

Geography sustainability project

Teaching your students about human impact on ecosystems and biodiversity? Show Jamie's video to help bring to life how learning about sustainability can map onto a real-life job, that helps do good in this world.

Career planning

Helping students think about their future? Use the videos to show the different career paths at JLR, encouraging students to reflect on their own interests and skills and how they might align with jobs in the automotive industry and beyond!

Design & technology coursework

Have you just set your students a piece of design coursework? Show Imisi's video to highlight how in a real-world setting product development can involve lots of different people and processes.